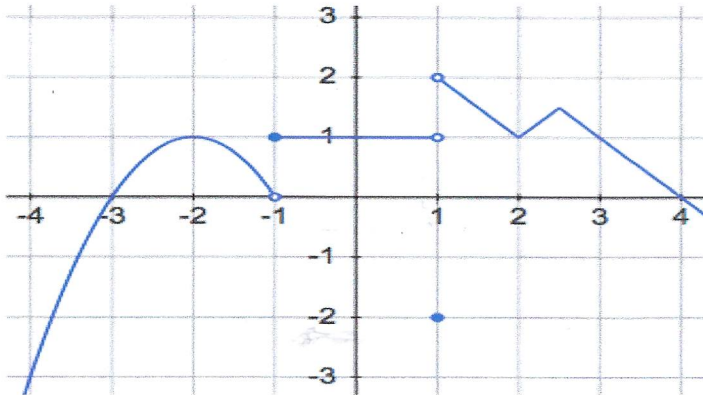


III. Based on the graph find the limits



a) $\lim_{x \rightarrow -1^+} f(x) = 1$

b) $\lim_{x \rightarrow -1^-} f(x) = 0$

c) $\lim_{x \rightarrow -1} f(x) = \cancel{1} \quad f(-1) = 1$

d) $\lim_{x \rightarrow 1^+} f(x) = 2$

e) $\lim_{x \rightarrow 1^-} f(x) = 1$

f) $\lim_{x \rightarrow 1} f(x) = \cancel{1} \quad f(1) = -2$

g) $\lim_{x \rightarrow 2^+} f(x) = 1$

h) $\lim_{x \rightarrow 2^-} f(x) = 1$

i) $\lim_{x \rightarrow 2} f(x) = 1 \quad f(2) = 1$